



# Meet Pair Dental

Grow your Dental Practice Team with a Traveling Specialist

The most successful independent and group practices strive to achieve a multi-specialty dental practice.

Pair Dental matches traveling specialists like oral surgeons and endodontists with general practice owners. If you've ever wondered what it would be like if you could keep specialty production in-house, we'd like to show you how rewarding it can be to take the leap and hire a specialist.

## Benefits

- › Maintain a higher standard of care for your patients
- › Take a multidisciplinary approach to your treatment planning
- › Convenient appointments for your patients in one facility
- › Keep ~50% of specialty production in-house
- › Additional restorative income

## Why Work With Pair Dental?

We've been helping dental practice's onboard specialists successfully for over 6 years. With 360+ specialists in our network, we provide practice owners a selection they

wouldn't find anywhere else. That gives our members the comfort of knowing that if there's a disconnection, we'll be able to find a replacement quickly and onboard them efficiently to provide continuity of care.

### Specialties To Consider

Most specialists are paid 50% of production with variations by specialty and region. Some specialists who are in high demand might require a daily per diem, especially if they're traveling a long distance.

### How Much Are Specialists Paid?

Most specialists are paid 50% of production with variations by specialty and region. Some specialists who are in high demand might require a daily per diem, especially if they're traveling a long distance.

### What Do I Supply to the Specialist?

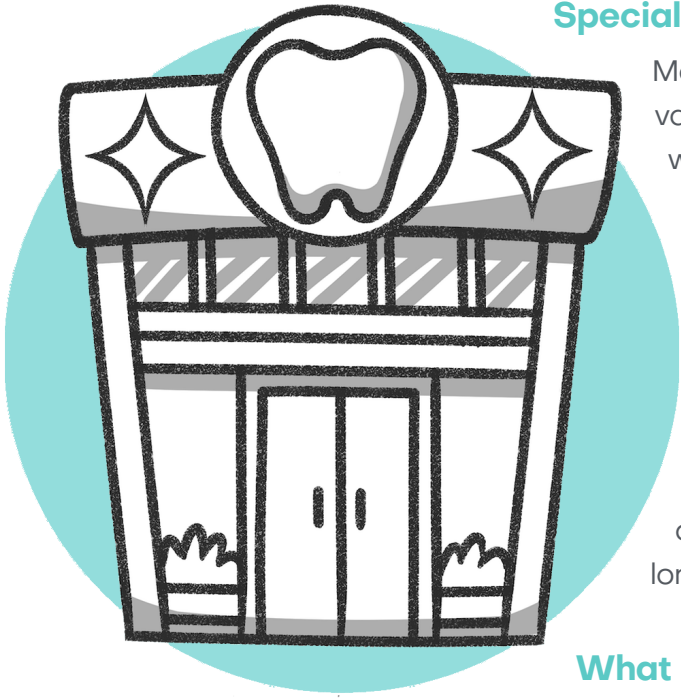
All our traveling specialists bring in their own instruments. Surgical sundries are provided by the practice including bone graft and membrane. Implant fixtures are split 50/50 with the practice.

### Why Bring in a Specialist?

Specialists perform more specialty procedures, more efficiently, with better outcomes, and higher insurance reimbursement rates than a restorative dentist. The benefit to your patients is easier dental visits at one facility, improved coordination of care, and consolidated billing. Growing your practice team and adding services is always a great way to attract new patients as well.

### Support From an Experienced Team

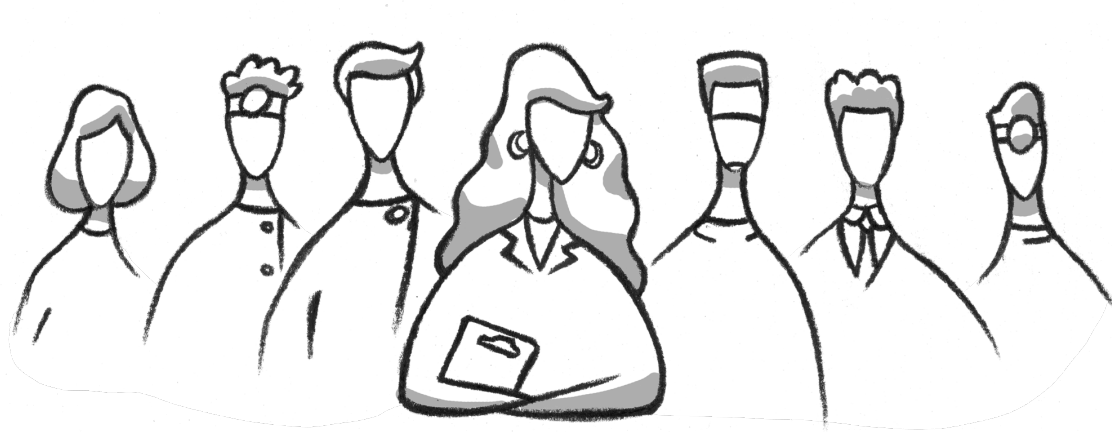
We provide many additional services to make this easy for you. We can take care of credentialing or specialty



insurance billing. We'll also provide your back office with a guidance and resources on integrating specialty. Our team will guide you through each step, from contracts to supplies, to make sure your team has a successful experience.

### How Does It Work?

- ▶ Register your practice **HERE**
- ▶ We'll connect on a call to discuss your practice goals and specialists available in our network.
- ▶ Once our specialists update us on their availability, we'll start making introductions.
- ▶ Our experienced team will continue to guide your team through all aspects of our preparation phase while you book patients for the specialist.
- ▶ Treatment day!



### Ready To Start Your Journey

To connect with a member of our team on a call to discuss details, you can call or SMS us, at 213-805-6282 or schedule a chat at: <https://calendly.com/pairdental-intro/practice>